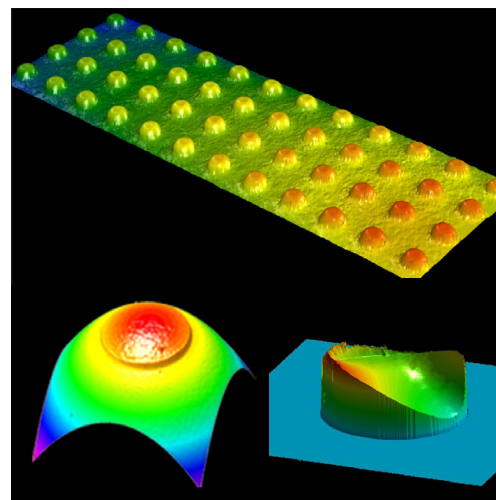
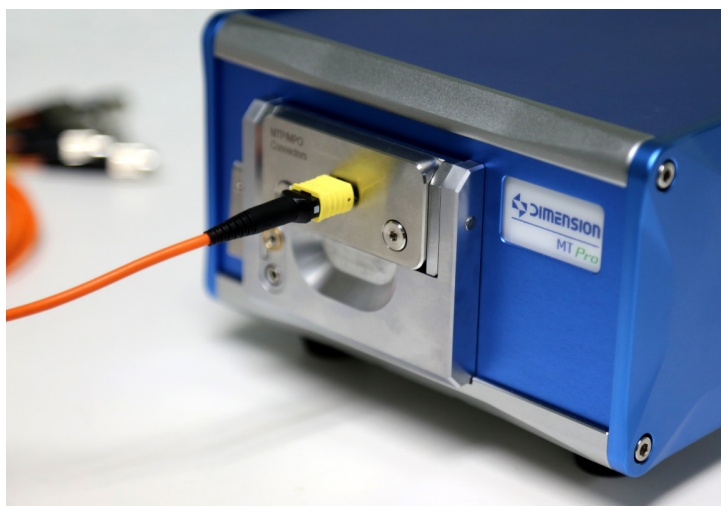


MT Pro Single/Multi - Channel Integrated Interferometer

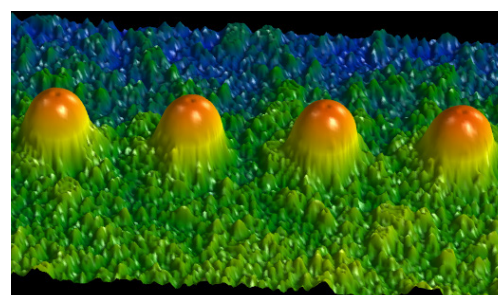


Main Features

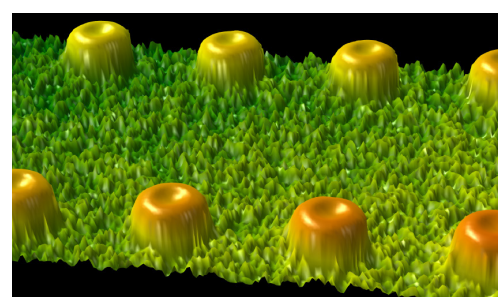
- Up to 1.5um image resolution
- Quick measurement, 0.5s for Single fibre or 5s for 12 core MT High repeat-ability
- High accuracy, calibrated with 0.1nm laser interferometer Ferrule frame mounting
- Compatible with single to 72 fibre measurement
- FOV 4.3*3.3mm, capable for 16 core MT measurement Auto focus and Auto measurement
- Auto calibration with reference mirror
- Quick switch between 0° and 8° fixtures
- Intuitive software interface

Up to 1.5um image resolution

MT Pro uses an upgraded optical system to accurately restore the details on the MPO facets and profile. The accurate raw data ensures the trust-able 3D testing results.



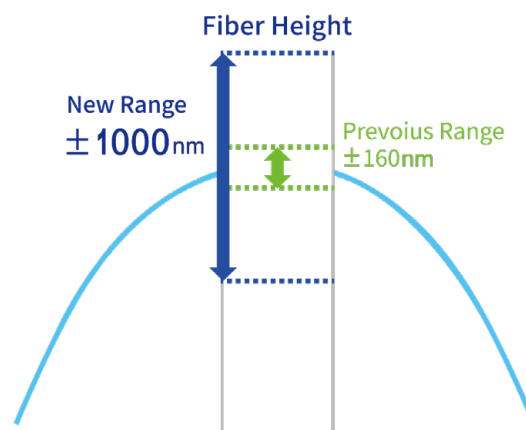
Facets of Multi Channel SM fibre



Facets of Multi Channel MM fibre

Single Fiber Height

The new optical and mechanical design extend the single fiber height range to -1000~+1000nm, in all testing conditions.



High repeat-ability

10 continuous testing results without plug-in and plug-out.

Repeat-ability of Fibre Height, 12 core MPO

| MT Pro | Fiberheight | | | | | | | | | | | |
|--------|-------------|--------|--------|--------|--------|--------|--------|--------|--------|---------|---------|---------|
| ID | Fiber1 | Fiber2 | Fiber3 | Fiber4 | Fiber5 | Fiber6 | Fiber7 | Fiber8 | Fiber9 | Fiber10 | Fiber11 | Fiber12 |
| Unit | (nm) | (nm) | (nm) | (nm) | (nm) | (nm) | (nm) | (nm) | (nm) | (nm) | (nm) | (nm) |
| Min | 1393 | 1476 | 1523 | 1487 | 1486 | 1475 | 1466 | 1473 | 1451 | 1442 | 1452 | 1479 |
| Max | 1412 | 1492 | 1540 | 1499 | 1501 | 1490 | 1482 | 1488 | 1465 | 1456 | 1466 | 1489 |
| MMD | 19 | 16 | 17 | 12 | 15 | 15 | 16 | 15 | 14 | 14 | 14 | 10 |
| Mean | 1400.1 | 1482.2 | 1530.6 | 1492.3 | 1492.9 | 1481.5 | 1471.5 | 1479 | 1455.5 | 1446.7 | 1456.8 | 1482.5 |
| 1 | 1401 | 1482 | 1531 | 1492 | 1493 | 1481 | 1471 | 1479 | 1455 | 1447 | 1456 | 1482 |
| 2 | 1395 | 1478 | 1526 | 1487 | 1488 | 1475 | 1467 | 1474 | 1451 | 1442 | 1452 | 1479 |
| 3 | 1395 | 1479 | 1526 | 1488 | 1488 | 1479 | 1467 | 1476 | 1453 | 1445 | 1455 | 1481 |
| 4 | 1403 | 1485 | 1534 | 1497 | 1497 | 1487 | 1476 | 1485 | 1461 | 1452 | 1462 | 1489 |
| 5 | 1406 | 1488 | 1538 | 1499 | 1501 | 1490 | 1482 | 1488 | 1465 | 1456 | 1466 | 1489 |
| 6 | 1398 | 1479 | 1529 | 1489 | 1491 | 1479 | 1469 | 1477 | 1453 | 1444 | 1454 | 1480 |
| 7 | 1395 | 1478 | 1526 | 1491 | 1490 | 1480 | 1470 | 1477 | 1454 | 1445 | 1456 | 1481 |
| 8 | 1393 | 1476 | 1523 | 1488 | 1486 | 1476 | 1466 | 1473 | 1452 | 1443 | 1454 | 1480 |
| 9 | 1412 | 1492 | 1540 | 1497 | 1499 | 1484 | 1472 | 1478 | 1452 | 1443 | 1452 | 1479 |
| 10 | 1403 | 1485 | 1533 | 1495 | 1496 | 1484 | 1475 | 1483 | 1459 | 1450 | 1461 | 1485 |

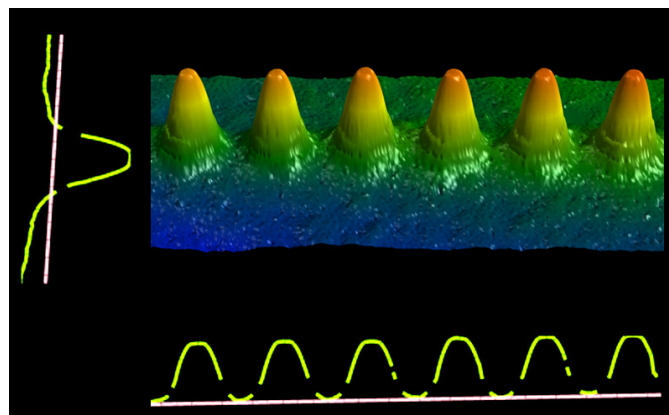
Repeat-ability of Fibre Core Dip, 12 core MPO

| MT Pro | CoreDip | | | | | | | | | | | |
|--------|---------|--------|--------|--------|--------|--------|--------|--------|--------|---------|---------|---------|
| ID | Fiber1 | Fiber2 | Fiber3 | Fiber4 | Fiber5 | Fiber6 | Fiber7 | Fiber8 | Fiber9 | Fiber10 | Fiber11 | Fiber12 |
| Unit | (nm) | (nm) | (nm) | (nm) | (nm) | (nm) | (nm) | (nm) | (nm) | (nm) | (nm) | (nm) |
| Min | 41.00 | 53.00 | 51.00 | 39.00 | 53.00 | 37.00 | 48.00 | 45.00 | 35.00 | 43.00 | 41.00 | 53.00 |
| Max | 48.00 | 61.00 | 61.00 | 56.00 | 68.00 | 54.00 | 59.00 | 59.00 | 47.00 | 50.00 | 51.00 | 59.00 |
| MMD | 7.00 | 8.00 | 10.00 | 17.00 | 15.00 | 17.00 | 11.00 | 14.00 | 12.00 | 7.00 | 10.00 | 6.00 |
| Mean | 45.90 | 57.40 | 57.00 | 49.50 | 60.00 | 46.60 | 54.90 | 51.90 | 39.20 | 47.40 | 45.50 | 56.50 |
| 1 | 48 | 61 | 57 | 54 | 60 | 47 | 59 | 53 | 37 | 49 | 51 | 58 |
| 2 | 45 | 53 | 54 | 56 | 53 | 53 | 56 | 51 | 40 | 49 | 44 | 55 |
| 3 | 48 | 58 | 60 | 48 | 68 | 45 | 55 | 54 | 39 | 50 | 45 | 57 |
| 4 | 47 | 59 | 57 | 49 | 61 | 45 | 58 | 53 | 40 | 49 | 46 | 56 |
| 5 | 41 | 56 | 51 | 48 | 56 | 37 | 53 | 45 | 38 | 43 | 41 | 55 |
| 6 | 46 | 57 | 58 | 56 | 59 | 48 | 57 | 50 | 38 | 46 | 45 | 58 |
| 7 | 48 | 60 | 59 | 43 | 66 | 50 | 52 | 57 | 38 | 48 | 46 | 56 |
| 8 | 44 | 53 | 61 | 46 | 60 | 54 | 48 | 59 | 40 | 48 | 47 | 59 |
| 9 | 46 | 61 | 56 | 56 | 58 | 48 | 57 | 49 | 47 | 47 | 46 | 58 |
| 10 | 46 | 56 | 57 | 39 | 59 | 39 | 54 | 48 | 35 | 45 | 44 | 53 |

◀ Accurate testing result

Each MT Pro system is calibrated with 0.1nm laser interferometer. The accuracy and consistency are committed for the key parameters for MT/MPO measurement, including ROC, Fibre height and Core dip.

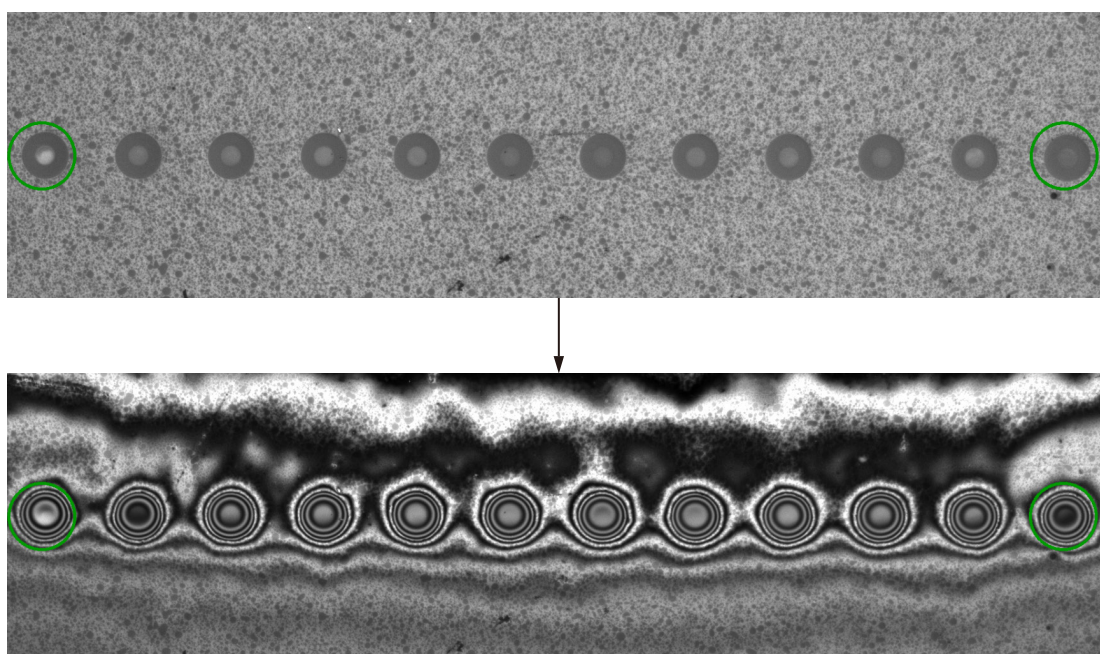
Almost identical Coredip value and fiber morphology



Coredip (nm)

◀ Auto focus

MT Pro can be configured to start a measurement from Auto Focus function. The Auto Focus function can eliminate the difference on each fibre channels. Further more, with Auto Focus function, the measurement procedure is significantly simplified, especially for APC connectors.



Quick Auto Focus

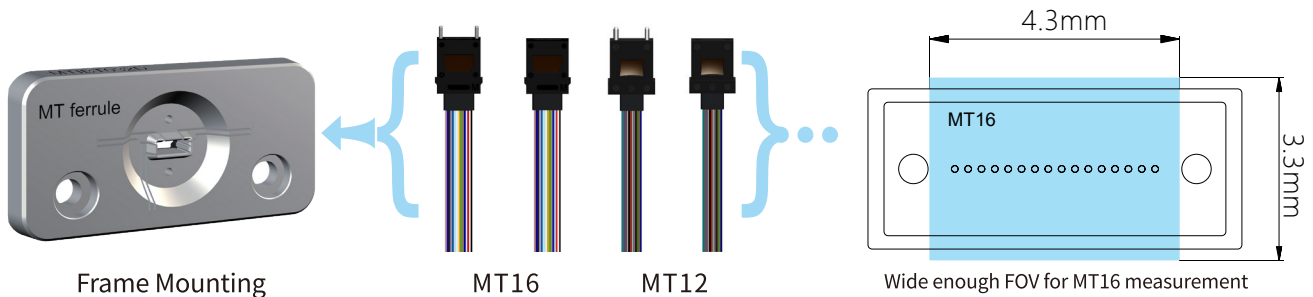
◀ Auto calibration with reference mirror

MT Pro applies reference mirror to calibrate the instrument automatically and maintains the peak performance at all conditions. Compared with manual tuning stage and data compensation, the auto calibration is quick and accurate.

Fast and accurate
calibration

◀ Unique Frame Mounting Fixture for MT Ferrule

Dimension uses its patented frame mounting fixture to hold the MT ferrules to be tested.



- 1.The frame mounting fixture for MT ferrule is compatible with MT4, MT8, MT12, MT16, MT24, MT32, MT48 and MT72. Only one fixture is needed to test all MT ferrules.
- 2.Committed accuracy and repeat-ability for Ferrule angle measurement .
- 3.Endurable and long life time fixture.
- 4.Safe to PIN hole of DUT.
- 5.Helpful to analyze the accuracy of polishing jig.

◀ Quick switch between 0° and 8° fixtures

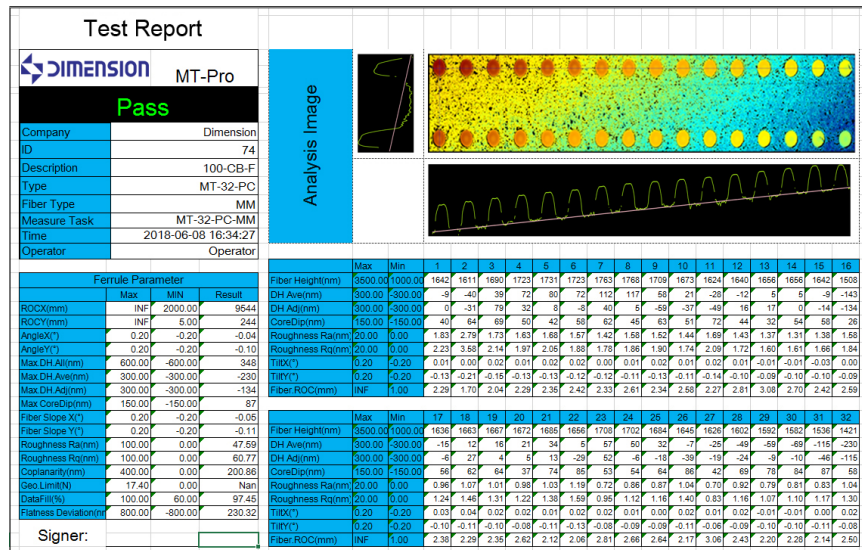
With the special designed fixture platform, 0° and 8° fixtures can be switched quickly. No extra calibration is needed. The high repeat-ability and reproducibility are guaranteed. The fixture platform is compatible for all types of MT/MPO PC and APC products.



Quick switch between PC and APC

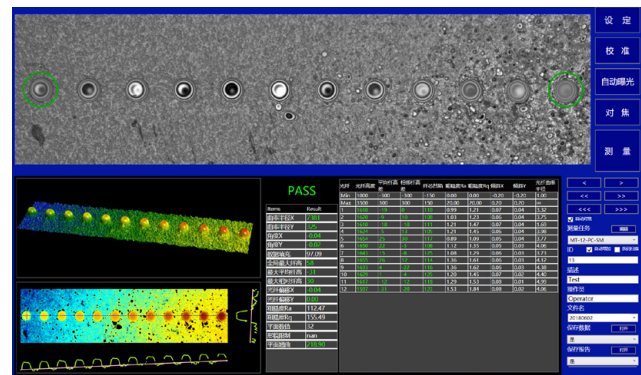
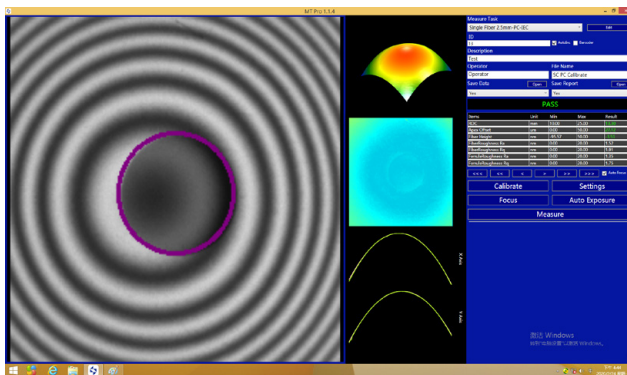
One click operation

Only one clicking is needed to complete the whole measurement procedures, including auto focus, scanning, analysis and all calculations. The testing report will be ready in seconds.

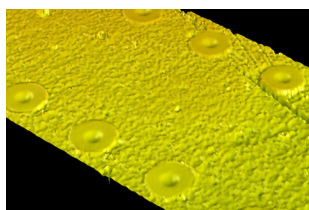


Intuitive software interface and excellent 3D rebuilding

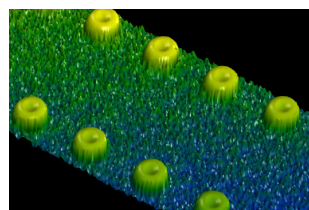
MT Pro applies intuitive and modularized software interface. The real time image, 3D profile, cross section, roughness and testing results are displayed in the user interface. The operation and configuration are convenient and user-friendly. Single/Multi-Channel measurement with one-click switching.



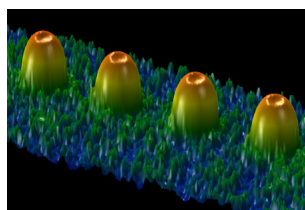
The details of the 3D profile visualize the polishing result and helps to analyze and improve the polishing process.



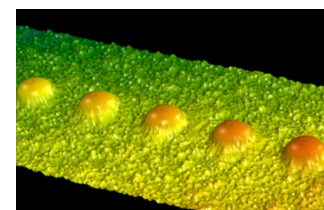
End face polishing and damage



Large Core dip



Slight Core dip



Core dip in SM

Quick measurement

The MT Pro hardware and software design improves the speed for MPO measurement. It takes only 0.5 second for single fibre measurement or 5 second for 12 core MPO measurement.



MTPro_MT ferrule(Frame mounting)



MTPro_MTP-16 Connector



MTPro_MT ferrule x16(PIN positioning)



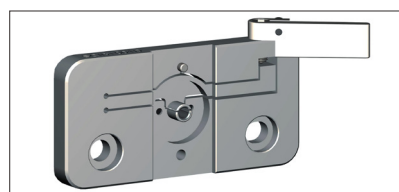
MTPro_MT ferrule x12(PIN positioning)



MTPro_MTP/MPO Connector



MTPro_LC



MTPro_SC

Specifications

| Item | | Range | Repeatability | Reproducibility |
|------------------------------|--------------------|--|---------------|-----------------|
| MT Mode | X/Y ROC*(mm) | 3 ~ Flat | 0.3% | 0.5% |
| | X/Y Angle* (°) | 0(PC) or 8(APC) | ±0.01 | ±0.02 |
| | Fiber Height* (um) | -2 — +8 | ±0.015 | ±0.025 |
| | CoreDip* (um) | -1 ~ +1 | ±0.01 | ±0.015 |
| Single Mode | ROC* (mm) | 3 ~ ∞ | ±0.1% | ±0.2% |
| | Fiber height* (nm) | -1000 ~ +1000 | ±1 | ±2 |
| | Apex Offset* (um) | 0 ~ 200 | ±0.5 | ±1.5 |
| | APC Angle* (°) | 0 or 8 | ±0.01 | ±0.015 |
| MPO Testing time(s) | | 5s (MT12) | | |
| Single Fiber Testing Time(s) | | 0.5 s | | |
| Compatible Devices | | MTP/MPO PC (Without PIN & With PIN) | | |
| | | MTP/MPO APC (Without PIN & With PIN) | | |
| | | MT Ferrule PC (Without PIN & With PIN) | | |
| | | MT Ferrule APC (Without PIN & With PIN) | | |
| | | Single Fiber(FC、SC、ST、LC、MU、E2000PC&APC) | | |
| Image Resolution | | 1.5um | | |
| Light Source | | White Light +Dual monochromatic light source | | |
| Power Supply | | DC 24V | | |
| Weight | | 5.22kg(mainbody) | | |
| Size | | 264mmx157mmx107mm | | |

Remarks: *Repeatability and Reproducibility are sigma values.
Repeatability, measure 10 times without moving connectors.
Reproducibility, measure 10 times with pull and plug.

Dimension Technology Co.,Ltd

Tel: +86 755-26480850

Email: sales@dimension-tech.com

Web: www.dimension-tech.com